



Adelaide

Contemporary

Experimental

2024 Annual Report



**ACErlu tampinthe, ngadlu Kurna yartangka inparrinthe. Kurna miyurna yaitya yarta-mathanya Wama Tarntanyaku. Parnaku yailtya, parnaku tapa purruna, parnaku yarta ngadlurlu tampinthe. Yalaka Kurna miyurna itu yailtya, tapa purruna, yarta kuma puru martinthe, puru warri-apinthe, puru tangka martulayinthe. Ngadlurlu tampinthe purkana pukinangku, yalaka.**

**ACE respectfully acknowledges the Kurna people are the traditional custodians of the Adelaide Plains. We recognise and respect their cultural heritage, beliefs and relationship with the land. We acknowledge that they are of continuing importance to the Kurna people living today. We acknowledge Elders past and present.**

Cover Image: Lee Salomone, 'Fragments; a widening vision' (2024), installation view, Adelaide Contemporary Experimental. Photography by Sam Roberts.

'Sisters of Lartelare' site visit (2024), Yartapuulti-Port Adelaide. Photography by Lana Adams.



## Contents

04	About ACE
05	Message from the Chair
06	2024 Snapshot
07	2024 Digital Reach
08	2024 Exhibition Program
17	Public Programs
22	Special Events
24	Studio Program
31	Future Studios Program
34	Visiting Curators Program
39	Porter Street Commission
41	2024 Board and Staff
42	2024 Supporters and Partners



ACE is supported by the South Australian Government through Arts South Australia and the Australian Government through Creative Australia, its arts funding and advisory body. ACE is a member of Contemporary Arts Organisations Australia.



## About ACE

Located in Adelaide's iconic Lion Arts Centre precinct, Adelaide Contemporary Experimental (ACE) is South Australia's leading independent contemporary visual arts organisation, proudly supporting artists to develop and present work on Kurna Yarta (Kurna Country).

Established through the merger of Contemporary Art Centre of South Australia (CACSA) and the Australian Experimental Art Foundation (AEAF) in 2017, ACE builds upon the legacy of over 100 years of innovative experimental arts practice in South Australia. Through our exhibitions, studios, public programs, education, professional development opportunities and publications, ACE expands the edges of contemporary visual art practice, embraces diversity and provides a space for artists to take risks.

## Our Approach to Programming

Since its inception, ACE's program has explored many timely issues, driven by the question: what is urgent to discuss today and who should be telling these stories? We recognise that contemporary art takes many forms, and have built a reputation for presenting new and important processes and methodologies for artistic practice.

## Our Audiences

ACE believes everyone has a right to access artistic expression and take part in South Australia's cultural life. We invite audiences to experience contemporary art in an environment that is simultaneously engaging, challenging and welcoming. ACE is committed to ensuring our programs and activities are as accessible as possible, for as many people as possible.

## Our Role in the Sector

ACE plays a vital role within the South Australian arts sector and cultural ecology, and champions best practice in a wide range of arts activities. We serve as a scaffold for building local artists' careers and are quickly growing a legacy of new work commissions which continue to circulate in galleries and collections across Australia. We believe that, by strongly supporting local artists and communities, and connecting them to our national and international peers, we can create greater opportunities and more expansive contexts for a diversity of art practitioners in South Australia.

Opening Celebrations: 'Somewhat Eternal' and 'Sisters of Lartelare' (2024), event documentation, Adelaide Contemporary Experimental. Photography by Morgan Sette.

# Message from the Chair

Amanda Pepe



Image: Amanda Pepe (2024). Adelaide Contemporary Experimental. Photography by Jonathan Van Der Knaap.

As I complete my first full year as Chair of ACE, I am very happy to report that 2024 has been a period of exciting change as well as a period of considered reflection about our role in the sector. We have focussed on how we might carry forward ACE's legacy of supporting and presenting contemporary and experimental arts practice with an eye on the future and how we can help shape it.

Our studio residencies, exhibitions, and live programs kept us busy throughout the year, starting with *Yucky*, a group exhibition exploring the complex intersections of disability and identity. This was followed by Lee Salomone's *Fragments; a widening vision*, which transformed the gallery space into a metaphorical garden. *Somewhat Eternal* by Justine Youssef – a sensory installation in partnership with UTS and the Institute of Modern Art transformed the gallery yet again. The year wrapped with *Studios: 2024*, showcasing diverse work developed through our flagship Studio Program.

We have been successfully expanding into our front gallery space where we hosted *Entities: The Concepts and Post-Object Exhibitions*, curated by Alexandra Nitschke, revisiting Adelaide's 1970s–80s art scene. The Kaurna Women's Art Collective held their first institutional show in this space with *Sisters of Lartelare*, sharing Kaurna culture and creating space for deeper learning and understanding. Finally, *Future Studios: 2024* highlighted work by young artists from our new education initiative. This pilot program offered eleven young South Australian artists intensive studio experiences and mentoring and its success has led to a new partnership with the SA Department for Education, focusing on Aboriginal student pathways in 2025, an exciting space to watch in the coming year.

ACE's new International Visiting Curators Program was launched, welcoming Helena Kritis (WIELS), John Tain (Lahore Biennale), and Olivia Aherne (Chisenhale Gallery), and will continue this year, building global connections with organisations aligned to ACE's mission.

I want to thank ACE's Artistic Director Danni Zuvela, Executive Director Louise Dunn, the ACE team, our artists, audiences, donors, and partners for the huge contribution to ACE's success in 2024 and I look forward to welcoming you back in 2025.



# 2024 Snapshot



Opening Night: 'Yucky' (2024), event documentation, Adelaide Contemporary Experimental. Photography by Thomas McCammon.

7,300

## ACE Visitation

8

## Exhibitions

# 34

## Artists exhibited

# 45

## Artworks presented

# 43

**New artworks  
commissioned**

17

## Public Programs

5

## Studio Artists

17

## Program Partners

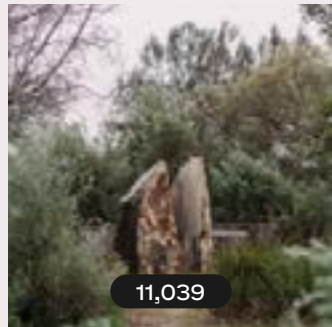
# 103

## Media mentions

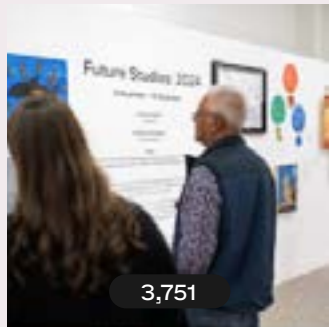
89

## Media mentions for SA Artists

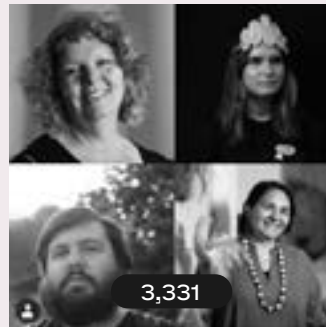
# 2024 Digital Reach



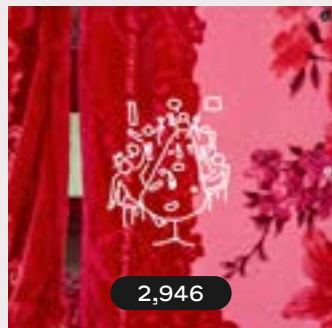
11,039



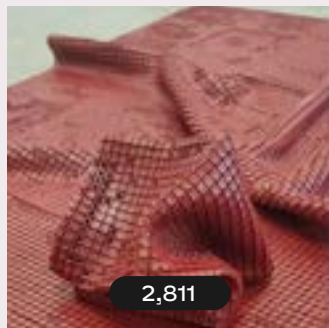
3,751



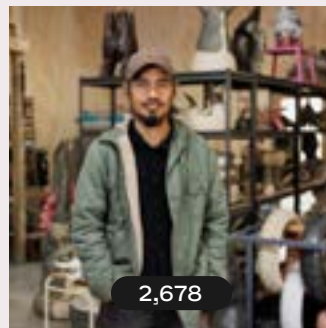
3,331



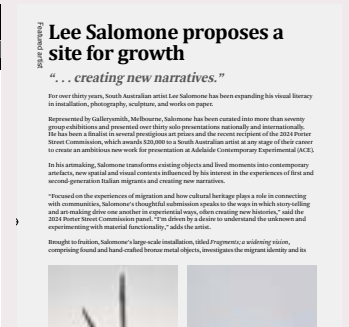
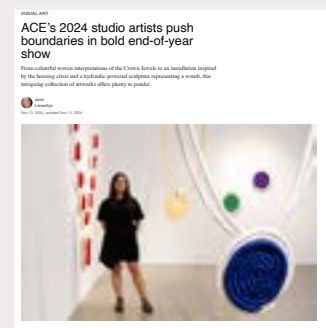
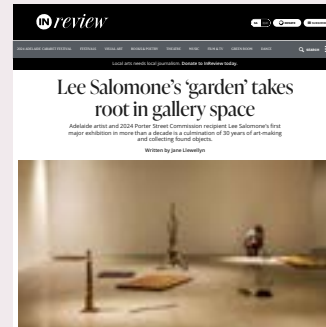
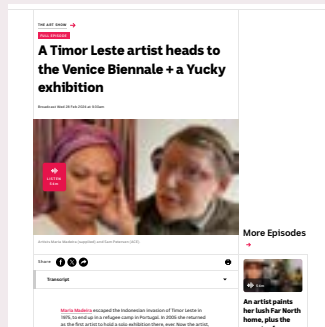
2,946



2,811



2,678



## Instagram

Followers: 7,967 +773  
Reach: 32.2K

## Facebook

Followers: 5,067 +181  
Reach: 50K +34%

## Website

Users: 28,000 +31%

## Press:

ABC Arts  
Art Almanac  
Artforum  
Art Guide  
ArtsHub  
Broadsheet  
CityMag  
Homebound  
InDaily  
InReview  
SA Life  
VAULT

# Exhibition Program



Opening Celebrations: 'Somewhat Eternal' and 'Sisters of Lartelare' (2024), event documentation, Adelaide Contemporary Experimental. Photography by Morgan Sette.



# Yucky

Group exhibition featuring pivotal Australian and international contemporary artists

**“Yucky is a well-paced exhibition tackling some of the big topics of contemporary society. It centres disabled, chronically ill, deaf and neurodivergent artists on an equal footing.”**

**— ArtsHub**

Lead Artist:	Sam Petersen
Artists:	Josh Campton Sophie Cassar Makeda Duong Lorcan Hopper Elizabeth Reed Finnegan Shannon
Facilitators:	Rayleen Forester Grace Marlow Patrice Sharkey
Public Program Curators:	Hen Vaughan William Maggs
Exhibition Dates:	17 February – 4 May 2024
Venue:	ACE



Opening Night: ‘Yucky’ (2024), event documentation, Adelaide Contemporary Experimental. Photography by Thomas McCammon.

*Yucky* was a group exhibition that explored the personal and political complexities embedded in disabled experience. Led by artist Sam Petersen in conversation with ACE, the exhibition’s title and premise challenged dominant narratives around disability through humour, confrontation and care. *Yucky* featured new and recent works by pivotal Australian and international contemporary artists, and centred the perspectives and lived experiences of those who are disabled, chronically ill and neurodivergent.

# Yucky Reading Room

A space to encourage conversation and self-education

“This is a space people can stop and take a rest, and learn more about disability justice and advocacy through a series of resources curated by the *Yucky* artists, [ranging] from books to podcasts and videos.”

– Grace Marlow

Exhibition Dates: 17 February – 4 May 2024

Venue: ACE



Opening Night: 'Yucky' (2024), event documentation, Adelaide Contemporary Experimental. Photography by Thomas McCammon.

For the *Yucky Reading Room*, ACE gathered rich texts, audio, and video that inspired each *Yucky* exhibition artist. The resulting collection engaged with topics such as illness, the abject, disability, access advocacy, and the body as a political state.

The *Yucky Reading Room* and the exhibition's public programs shared this space to encourage conversation and self-education. It was a room for guests to gather, learn, explore, and critique the ideas shared across ACE's galleries.

Additionally, a suite of digital resources was made available for audiences who could not access the gallery, extending *Yucky*'s presence beyond the gallery walls.

# Fragments; a widening vision

2024 Porter Street Commission

“The exhibition encapsulates the artist’s personal history and explores ideas around identity and connection to place.”

– Jane Llewellyn for InDaily

Artist: Lee Salomone

Curator: Rayleen Forester

Exhibition Dates: 1 June – 10 August 2024

Venue: ACE



Opening Night: 'Fragments; a widening vision' (2024), event documentation, Adelaide Contemporary Experimental. Photography by Peter Fong.

*Fragments; a widening vision* was Lee Salomone’s first major institutional exhibition in over a decade. Developed through deep consultation with Kaurana Elders and community, the exhibition reflected on intergenerational learning, migration, and the complexities of settler identity. Salomone used bronze casting and found materials to create a metaphorical garden that explored personal and ancestral histories, offering a quiet act of allyship through care, storytelling, and connection to Country. Presented as the 2024 Porter Street Commission.



# Entities: The Concepts and Post-Object Exhibitions

Front room activation

“[the exhibition] features original materials such as posters, essays and video footage that shine light on the “wild and often unruly practices of some of Australia’s most experimental artists at a critical moment in time”.”

– InReview

Curator: Alexandra Nitschke

Archivist in Residence: Cameron Fleming

Exhibition Dates: 1 June – 10 August 2024

Venue: ACE



Opening Night: 'Entities: The Concepts and Post-Object Exhibitions' (2024), event documentation, Adelaide Contemporary Experimental. Photography by Peter Fong.

*Entities: The Concepts and Post Object Exhibitions* reflected on a formative moment in Adelaide’s art history, when the city was a hub for radical, idea-driven practice. The exhibition highlighted key works and moments from the Contemporary Art Society of South Australia (CAS(SA)) and the Experimental Art Foundation (EAF), two influential artist-led spaces that shaped the direction of contemporary art locally and nationally.

# Emmaline Zanelli: Magic Cave

Presented by firstdraft in partnership with ACE.

“The work is imbued with layers of playful yet haunting dualities further evident in the title that Zanelli notes she chose because of the closeness of ‘cage’ to ‘cave’.”

– Michelle Wang for fineprint

Artist:	Emmaline Zanelli
Exhibition Dates:	30 August – 6 October 2024
Venue:	firstdraft (NSW)



Emmaline Zanelli, 'Magic Cave' (2024), installation view, firstdraft, Sydney. Photography by Jessica Maurer. Courtesy firstdraft.

*Magic Cave* by Emmaline Zanelli grew from research into family dynamics and youth culture in mining towns, with a focus on Roxby Downs on Kokatha Country, Roxby Downs. Developed through a series of workshops with local young people, the work offered an absurdist, fantastical take on life underground, blending playfulness with themes of confinement and inherited labour.

The sculpture incorporated pet cages and domestic materials to explore how personal lives are shaped by broader economic systems. *Magic Cave* was presented by firstdraft in partnership with ACE, and supported by the Samstag Museum and Adelaide Film Festival EXPAND Lab.

# Somewhat Eternal

A co-commission by Adelaide Contemporary Experimental, the Institute of Modern Art, and UTS Gallery & Art Collection.

“Somewhat Eternal uses intersecting narratives and plant scented embroidered textiles to explore the role of plants in settler agriculture and migrant experience.”

– CityMag

Artist: Justine Youssef

Curators: Stella Rosa McDonald  
Tulleah Pearce  
Patrice Sharkey

Exhibition Dates: 31 August – 19 October 2024

Venue: ACE



Justine Youssef, 'Somewhat Eternal' (2024), installation view, Adelaide Contemporary Experimental. Photography by Sam Roberts.

*Somewhat Eternal* by Justine Youssef was a multi-sensory installation exploring displacement, ritual and ecology. Centred around a three-channel film of the artist's aunt performing R'sasa, a traditional ritual of protection, the work connected familial healing practices to the broader impacts of colonisation and occupation in Lebanon. Scented textiles and plant hydrosols deepened the sensory experience, drawing links between land, memory and resilience.



# Kurna Women's Art Collective: Sisters of Lartelare

Front room activation

“It is a radical investment in a group of women understanding themselves and understanding collectivism – but raises questions about the nature and status of the art object, and how we define contemporary art.”

– InDaily

Artists: Kurna Women's Art Collective

Curator: Rayleen Forester

Exhibition Dates: 31 August – 19 October 2024

Venue: ACE



Kurna Women's Art Collective, 'Sisters of Lartelare' (2024), installation view, Adelaide Contemporary Experimental. Photography by Sam Roberts.

*Sisters of Lartelare* was a multi-sensory exhibition by the Kurna Women's Art Collective, led by emerging Kurna leader Bonny Brodie with guidance from Aunty Margaret Brodie. Presented at ACE as the Collective's first institutional exhibition, the project centred on Kurna stories and cultural practices connected to Yartapuulti–Port Adelaide.

Developed through intergenerational workshops, community events and cultural mapping, the exhibition focused on scent distillation using native plants, and learning from First Nations women leaders. Grounded in care and respect, the work offered a powerful interruption of colonial narratives and ensured cultural knowledge was shared with future generations.

# Studios: 2024

ACE Studio Program Exhibition

“From colourful woven interpretations of the Crown Jewels to an installation inspired by the housing crisis and a hydraulic-powered sculpture representing a womb, this intriguing collection of artworks offers plenty to ponder.”

– Jane Llewellyn for InDaily

Artists: Carly Tarkari Dodd  
Abbey Murdoch  
Marian Sandberg  
Katey Smoker  
Emmaline Zanelli

Curator: Danni Zuvela

Exhibition Dates: 9 November – 14 December 2024

Venue: ACE

Essay Writers: Troy-Anthony Baylis  
Coby Ann Edgar  
Bec Gallo  
Pia van Gelder  
Elvis Richardson



'Studios: 2024', installation view, Adelaide Contemporary Experimental. Photography by Sam Roberts

*Studios: 2024* was a group exhibition showcasing new work by ACE's 2024 Studio Program artists: Carly Tarkari Dodd, Abbey Murdoch, Marian Sandberg, Katey Smoker, and Emmaline Zanelli. Curated by ACE Artistic Director Danni Zuvela, the exhibition highlighted diverse practices spanning painting, installation, sculpture, assemblage and video, developed through the Studio Program's year-long professional development opportunity.

# Future Studios: 2024

ACE Future Studios Program Exhibition

*Future Studios: 2024* exemplifies the creativity, resilience, and potential of the next generation of artists.

Artists:

- Mia Smith Ballard
- Sia Clignon
- Caylim Karpany-Drover
- Jareth Newchurch
- Kirene Newchurch
- Kuliah Power
- Sarah Rasheed
- Zahra Ali Raza
- Jada Sharp
- Ella Southam
- April Strevens

First Nations Artist Mentor: Crista Bradshaw

Project Coordinator: Jake Yang

Exhibition Dates: 9 November – 14 December 2024

Venue: ACE



Opening Night: 'Future Studios: 2024' (2024), event documentation, Adelaide Contemporary Experimental. Photography by Lana Adams.

*Future Studios: 2024* was a group exhibition presenting the artistic practice of 11 students from Years 10 to 12. Through an intensive week-long program at ACE, these young artists gained firsthand experience of working as practicing studio artists. The exhibition explored themes of culture, identity, and storytelling, with works in painting, drawing, sculpture, textiles, and installation.



# Public Programs



# Public Programs – Tours, Talks and Workshops



## Diverse Expressions: Dialogues on Creativity and Disability

23 February 2024

As part of the Adelaide Festival's *Time to Talk* series, visitors joined Sam Petersen and Restless Dance Theatre artists for a public conversation on disability and creativity. Held at U City, the event featured two discussions and a keynote performance by Petersen, presented in partnership with ACE.

Image 1: 'Adelaide Festival: Diverse Expressions' (2024), event documentation. U City. Photography by Daivd Jobling  
Image 2: Artist Talk: 'Mess Hall' (2024), event documentation, Adelaide Contemporary Experimental. Photography by Grace Marlow.  
Image 3–4: 'YUMMY Discussions: Abjection' (2024), event documentation. Adelaide Contemporary Experimental. Photography by Peter Fong.



## Yucky – Mess Hall

24 February 2024

As part of *Yucky*, Mess Hall invited visitors to rely on one another, feeding fellow guests and asking to be fed, in a shared act of support and interdependence. Edible creations by Kat Keane responded to the exhibition's themes. The event also included access to *Yucky* and the *Reading Room* in the ACE foyer.



## YUMMY Discussions: Disability Pride

24 April 2024

*YUMMY Discussions* was a two-part discussion series accompanying *Yucky*. In this session, *YUMMY Discussions: Disability Pride*, curators William Maggs and Hen Vaughan were in conversation with Sam Wilson on self-determination, disability culture, and Deaf Gain. The event was Auslan interpreted and live streamed.



## YUMMY Discussions: Abjection

1 May 2024

*YUMMY Discussions* was a two-part discussion series accompanying *Yucky*. In this session, curators William Maggs and Hen Vaughan were in conversation with V Barratt on abjection in relation to disability and gender. The event was Auslan interpreted and live streamed.

# Public Programs – Tours, Talks and Workshops



## Curator Talk: John Tain

12 March 2024

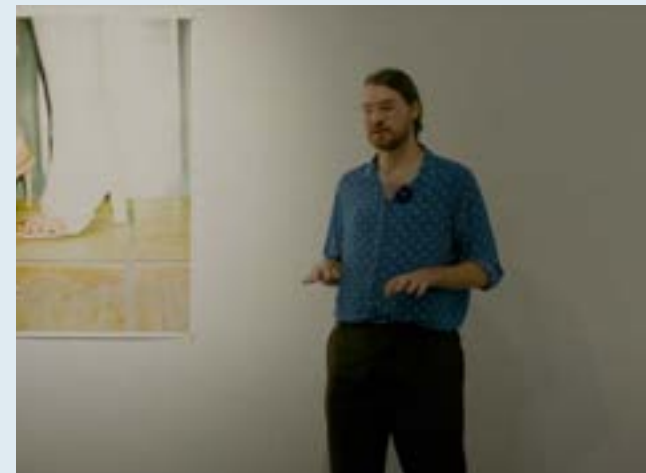
ACE hosted curator and art historian John Tain for a public talk on his practice, coinciding with his role as inaugural Curator of the 2024 Lahore Biennale. The event formed part of ACE's Curator Talks series, connecting visiting curators with Adelaide's arts community.



## Artist Talk: Penelope Cain – Show and Tell and Ask

2 April 2024

Artist Penelope Cain joined Artistic Director Danni Zuvela for a one-off public talk exploring post-extractive landscapes, the Holocene, and more-than-human memory. The event invited audiences to engage with complex ideas through artistic practice.



## Audio Described Tour: Yucky

6 April 2024

Visitors attended an audio-described tour of *Yucky* led by Public Program Curator Hen Vaughan, sharing insights from their work with the exhibiting artists.

Image 1: Curator Talk: John Tain (2024), event documentation. Adelaide Contemporary Experimental.

Image 2: Penelope Cain, 'Song of Lyrebirds Haupapa'. Fieldwork Haupapa/ Tasman Glacier head. Playing lyrebird songs to the glacier. Work in progress. Courtesy the Artist.

Image 3: Guided Curator Tour: Yucky (2024), event documentation. Adelaide Contemporary Experimental. Courtesy Repeater Productions.



# Public Programs – Tours, Talks and Workshops



## Public Program Curator Tour: Yucky

13 April 2024

On Auslan Day, visitors attended a guided tour of *Yucky* led by Public Program Curators William Maggs and Hen Vaughan, who shared insights from their work with the exhibiting artists.



## Dark Botany Workshop

22 June 2024

ACE hosted a queer ecology workshop led by Henry Wolff and Artistic Director Danni Zuvela, where participants made native seedballs for guerrilla gardening and listened to live preview readings from *Dark Botany: The Herbarium Tales*. Clay, compost, seeds and herbal tea were supplied.



## Deaf-led Tour – *Fragments; a widening vision*

29 June 2024

Visitors attended a Deaf-led Auslan-only tour of *Fragments; a widening vision* by 2024 Porter Street Commission recipient Lee Salomone, guided by Samantha Wilson.

Image 1: Guided Curator Tour: *Yucky* (2024), event documentation, Adelaide Contemporary Experimental. Courtesy Repeater Productions.

Image 2: Dark Botany Workshop (2024). Adelaide Contemporary Experimental.

Image 3: Opening Night: '*Fragments; a widening vision*' (2024), event documentation, Adelaide Contemporary Experimental. Photography by Peter Fong.



# Public Programs – Tours and Talks



## Artist Talk: Lee Salomone – Fragments; a widening vision

27 July 2024

Artist Lee Salomone joined Associate Curator Rayleen Forester for a conversation about *Fragments; a widening vision*, reflecting on memory, ancestry, and the exhibition's poetic use of form and image.



## Deaf-led Tour – Somewhat Eternal

19 October 2024

Visitors attended a Deaf-led tour of *Somewhat Eternal* by Justine Youssef, guided by Samantha Wilson, followed by a tour of *Dwelling (Adelaide Issue)* by Archie Moore at Samstag Museum of Art. Presented in partnership with Samstag.



## Artist Talk: Studios: 2024

23 November 2024

Audiences heard from 2024 Studio Program artists Carly Tarkari Dodd, Abbey Murdoch, Marian Sandberg, Katey Smoker and Emmaline Zanelli in conversation with Artistic Director Danni Zuvela, reflecting on their practices and the development of new work for *Studios: 2024*.

Image 1: Lee Salomone's studio (2024). Detail. Photography by Peter Fong.

Image 2: Justine Youssef, 'Somewhat Eternal' (2024), installation view, Adelaide Contemporary Experimental. Photography by Sam Roberts.

Image 3: From left to right: Emmaline Zanelli, Katey Smoker, Carly Tarkari Dodd, Abbey Murdoch and Marian Sandberg, 2024 Studio Program artists, Adelaide Contemporary Experimental. Photography by Thomas McCammon.

# Special Events







## NAIDOC In Conversation – Keep the fire burning! Blak, loud and proud

11 July 2024

ACE hosted a panel discussion facilitated by Sonya Rankine, with First Nations artists Nici Cumpston, Dominic Guerrero and Carly Tarkari Dodd sharing their practices, stories, and connections to Country.



## Diner Club at *Fragments; a widening vision*

25 July 2024

Guests attended a one-off dinner inside *Fragments; a widening vision* by Lee Salomone, with a menu curated in response to the exhibition's themes by South Australian Chef and Tasting Australia Festival Director, Karena Armstrong.



## ACE Studio Open Day

10 August 2024

Visitors toured ACE's upstairs studios and met the 2024 Studio Program artists. The afternoon included informal in-conversations with the artists and Associate Curator Rayleen Forester.



## Diner Club at *Somewhat Eternal*

17 October 2024

Held inside Justine Youssef's exhibition *Somewhat Eternal*, this special edition of Diner Club featured a meal curated by Muine Kamleh, drawing on his Syrian heritage and the exhibition's themes.

Image 1: 'NAIDOC In Conversation – Keep the fire burning! Blak, loud and proud' (2024), event documentation, Adelaide Contemporary Experimental. Photography by Peter Fong.

Image 2: Diner Club at 'Fragments; a widening vision' (2024), event documentation. Adelaide Contemporary Experimental. Photography by Andy Rasheed

Image 3: ACE Studio Open Day (2024), Adelaide Contemporary Experimental. Photography by Lana Adams.

Image 4: Diner Club at 'Somewhat Eternal' (2024), event documentation. Adelaide Contemporary Experimental. Photography by Morgan Sette.

# Studio Program

A high-angle, close-up photograph of a person with dark hair, wearing a black long-sleeved shirt and black gloves, working on a small, light blue plastic component. They are using orange-handled pliers. The workspace is cluttered with various materials: a large blue plastic tray with a white grid pattern is on the left; several red and orange wire mesh trays are stacked in the background; and a row of small, colorful plastic components (pink, blue, and orange) is laid out on the work surface. The person is focused on their task, with their head tilted down.

Open Studios (2024), Emmaline Zanelli's studio, Adelaide Contemporary Experimental. Photography by Lana Adams.



# Studio Program

## Overview



ACE is home to fully-supported, rent-free CBD-based studios for South Australian artists.

The ACE Studio Program provides professional development opportunities, including studio visits with Australian and international curators; participation in public programs; mentorship by ACE staff; and prominent profiling and promotional opportunities.

It is the only program of its kind in the state and is an invaluable pathway for artists to gain national recognition. Working as part of a cohort of fellow artists, the Studio Program gives residents the space to experiment with their practice and grow their professional careers.

**“The ACE Studio Program was a phenomenal opportunity to nourish and propel my practice in directions I could never have imagined. ACE’s unique combination of support and professional development alongside targeted opportunities for growth were an incredible scaffold for my practice.”**

**– Marian Sandberg**

ACE’s Studio Program would not be possible without Creative Australia, Arts South Australia and the Copyright Agency’s Cultural Fund. ACE is committed to building pathways for South Australian artists across Australia, demonstrated by our partnerships with Helpmann Academy, Adelaide Central School of Art and firstdraft, Sydney.

It is also supported by the generous contributions of the Studio Program Donors: Anton Andreacchio, Jane Ayers, Sally Ball, Candy Bennett, James Darling AM, Dr Alex Grant, Amanda Harkness & Karen Barrett, Thomas Lambert, Pam & David McKee AO, Jane Michell, Amanda Pepe, John Phillips, Louise Rigoni, Marian Sandberg, Tracey Whiting AM.

# Carly Tarkari Dodd

2024 Studio Program Artist



**“Conceptually Carly’s work is like studying stitching techniques. The devil is in the detail and there are complex layers to unpick.”**

**– Coby Ann Edgar**



Carly Tarkari Dodd is an artist and curator of Kurna, Narungga, and Ngarrindjeri descent, known for creating contemporary woven jewellery and sculptures. She was taught traditional weaving by Ngarrindjeri Elder Aunty Ellen Trevorrow at a young age. Dodd’s work explores First Nations activism, cultural resilience, and highlights the contrast of Indigenous experiences with forms of colonial power. Her work has gained noteworthy recognition, with recent features at Australian Fashion Week on the David Jones Indigenous Fashion Projects Runway and in Vogue Australia magazine.

Image 1: Carly Tarkari Dodd, Adelaide Contemporary Experimental. Photography by Thomas McCammon.

Image 2: 'Studios: 2024', installation view, Adelaide Contemporary Experimental. Photography by Sam Roberts.

# Abbey Murdoch

2024 Studio Program Artist



**“Imbued with the artist’s personal memory, familiarity and experience, Murdoch activates these materials and images as a document of the social neglect surrounding the provision and upkeep of public housing as the subject of her work.”**

**– Elvis Richardson**

Abbey Murdoch was selected to participate in the 2024 Studio Program in partnership with Adelaide Central School of Art.



Abbey Murdoch is a multidisciplinary visual artist residing and creating on Kurna Country in South Australia. In her installation practice, she constructs immersive environments evoking the experience of low-income and public housing. Through her work, Murdoch seeks to unveil different perspectives on the idea of home, understood not merely as a physical structure, but as a resonant repository of memories and experiences. Her works pay testament to the lived experiences of marginalised communities, offering a platform for reflection, memorial, and dialogue. In her exploration of the complex social dynamics around abandoned public housing properties, Murdoch documents houses left to decay, despite the pressing need for affordable housing among families left on waiting lists for years. Her work seeks to memorialise these homes, acknowledging them as emblems of struggle, but also, latent hope.

Image 1: Abbey Murdoch, Adelaide Contemporary Experimental. Photography by Thomas McCammon.

Image 2: 'Studios: 2024', installation view, Adelaide Contemporary Experimental. Photography by Sam Roberts.

# Marian Sandberg

2024 Studio Program Artist



“The work is familial and estranged in more ways than one, as Sandberg considers the ontology of her own uterus as she recalls her experience with a remote uterus; that of her surrogate.”

– Pia van Gelder



Marian Sandberg works across sculpture and installation. Through her practice, she seeks to understand what it means to be human in this age of technology. She does so by programming a diverse collection of old and new technologies in the expanded field, offering alternative systems to inhabit, and grounds for re-thinking inherited technological norms. This is a longstanding research area for Sandberg, who holds a Master of Information Systems from the University of South Australia and a Bachelor of Visual Art from the Adelaide Central School of Art.

Image 1: Marian Sandberg, Adelaide Contemporary Experimental. Photography by Thomas McCammon.

Image 2: 'Studios: 2024', installation view, Adelaide Contemporary Experimental. Photography by Sam Roberts.



# Katey Smoker

2024 Studio Program Artist



**“They form grids and structures expanding into the fields of relief and sculpture. They mimic recognisable forms and objects.”**

**– Troy-Anthony Baylis**

Katey Smoker was selected to participate in the 2024 ACE Studio Program in partnership with the Helpmann Academy.



Katey Smoker is an abstract artist who explores the intersection of painting and sculpture by using paint as a sculptural material. Her practice is defined by iterative, process-driven experimentation and material play, where the act of creating is as important as the final form. With a background in metallurgy and material science, Smoker delves into the physical properties and behaviours of paint to create intricate textures and structures that both acknowledge and subvert the form of the grid. Central to her approach is an engagement with unpredictability and the evolving nature of material and process, which generates a fresh perspective and new material realities at the convergence of painting and sculpture.

Image 1: Katey Smoker, Adelaide Contemporary Experimental. Photography by Thomas McCammon.

Image 2: 'Studios: 2024', installation view, Adelaide Contemporary Experimental. Photography by Sam Roberts.

# Emmaline Zanelli

2024 Studio Program Artist



“At the core of Emmaline Zanelli’s practice there are bodies putting machines to work, and bodies working in the service of machines.”

– Bec Gallo



Emmaline Zanelli is a multimedia artist living in Tarndanya/Adelaide on unceded Kaurna Country. Her projects often involve obscure narratives using humour and surrealism combining photography, video, set building, costume and performance for the camera. These techniques create a framework for Zanelli to explore themes of memory, labour and relationships. Since 2016, Zanelli has been a co-director of South Australian artist collective The Bait Fridge, a multi-arts collective who deliver performances and workshops nationally with a focus on regional/remote and youth collaboration.

Zanelli’s work as an ACE Studio Artist in 2024 saw her selected for an exhibition, *Magic Cave*, with firstdraft gallery in Woolloomooloo.

Image 1: Emmaline Zanelli, Adelaide Contemporary Experimental. Photography by Thomas McCammon.

Image 2: ‘Studios: 2024’, installation view, Adelaide Contemporary Experimental. Photography by Sam Roberts.

# Future Studios Program





# Future Studios Program

## Overview



**“I learnt weaving and how soft sculptures are made, and I learnt how curators work and how I could become a full time artist in the future.”**

**– 2024 Future Studios participant**

The ACE Future Studios is a free program that provides fully-supported CBD-based studios to eight young South Australian artists for a one-week intensive period and mentoring across the year. This unique industry placement nurtures creativity and practical skills with the support of mentor artists, guest workshop artists, and ACE staff.

In 2024 11 young people participating in Future Studios gained an understanding of the impact of studio work and the daily activities involved in a professional artistic practice. They experienced working alongside their peers and they were able to meet the ACE studio artists, learn about their practice, and see works in development.

To expose the young people to different materials and methods, and give a broad insight into artists careers, the program offered a suite of workshops with contemporary studio practitioners Troy-Anthony Baylis, Brad Darkson, Carly Tarkari Dodd, and Kasia Tons.

The program concluded with the *Future Studios: 2024* group exhibition in the ACE front gallery, which showcased the artistic practice of the young artists. The exhibition explored themes of culture, identity, and storytelling, with works exploring painting, drawing, sculpture, textiles, and installation.

Opening Celebrations: 'Future Studios: 2024' (2024), event documentation, Adelaide Contemporary Experimental. Photography by Lana Adams.

In 2024 Future Studios was supported by Carclew, The Department for Education, and the City of Adelaide.



# Future Studios Workshops



## Carly Tarkari Dodd

Carly taught the young artists traditional Ngarrindjeri weaving techniques and talked about her career journey and what she does as a curator.



## Troy-Antony Baylis

Troy-Antony took the young artists through collage and mark-making techniques and discussed concept development and how he explores identity through his work.



## Kasia Tons

Kasia explored soft sculpture with the young artists and demonstrated how she makes her work and talked about her career journey.



## Brad Darkson

Brad showed the young artists how he incorporates sound and video into his works and taught them how they can produce their own work with simple equipment.

Image 1: 'Future Studios: 2024 Weaving Workshop', Carly Tarkari Dodd, (2024), workshop documentation, Adelaide Contemporary Experimental Photography by Lana Adams.

Image 2: 'Future Studios: 2024 Workshop' (2024), Troy-Antony Baylis, workshop documentation, Adelaide Contemporary Experimental.

Image 3: 'Future Studios: 2024 Workshop' (2024), Kasia Tons, workshop documentation, Adelaide Contemporary Experimental.

Image 4: 'Future Studios: 2024 Workshop' (2024), Brad Darkson, workshop documentation, Adelaide Contemporary Experimental.

# Visiting Curators



Open Studios (2024), Carly Tarkari Dodd's studio, Adelaide Contemporary Experimental. Photography by Lana Adams.





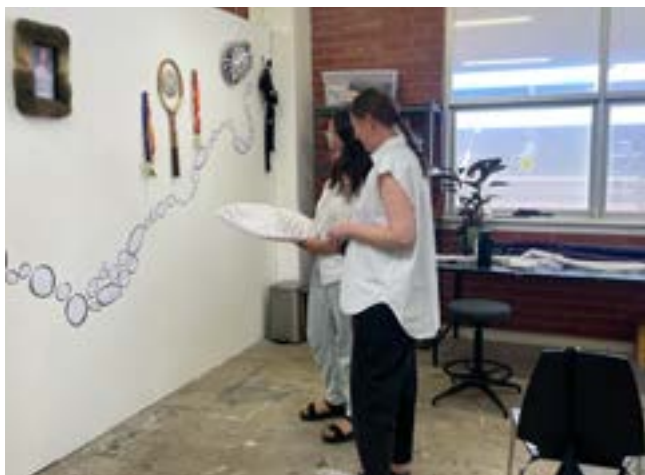
Opening Night: 'Fragments; a widening vision' (2024), event documentation, Adelaide Contemporary Experimental. Photography by Peter Fong.

## International Visiting Curators Program

Focussing on strengthening international markets with like-minded organisations around the world, ACE is focused on bringing international curators from across the globe to visit Adelaide. Each curator is affiliated with an organisation that is considered a leader in their field and aligns with ACE's ambitious programming and focus on contemporary and experimental arts practice.

By developing these important strategic relationships with high-profile organisations, ACE aims to strengthen relationships between South Australian artists and international networks. When establishing international partnerships, we prioritise opportunities that will provide high visibility and reputable connections for SA artists, as well organisations who share ACE's artistic values, sector role and operational capacity.

# 2024 International Visiting Curators



## Helena Kritis

Chief Curator at WIELS Centre for Contemporary Art in Brussels

WIELS is the leading centre for contemporary art in the heart of Europe's capital. It's a space for innovative ideas and creative experiences. WIELS aims to enrich the debate, provide new perspectives and stimulate the senses with a daring programme.



## John Tain

Art historian and Curator of the inaugural 2024 Lahore Biennale

Of Mountains and Seas was the theme of the third edition of the Lahore Biennale, curated by John Tain. Of Mountains and Seas showcased the convergence of art, environmental awareness, and global collaboration to help imagine alternative futures.



## Olivia Aherne

Curator at the Chisenhale Gallery in London, UK

Chisenhale Gallery was founded by artists. The same experimental vision and spirit of possibility that changed an empty veneer factory and brewery warehouse into an art gallery guides their work today. They commission and produce contemporary art, publish books and online material, and actively engage in social projects.

Image 1: Helena Kritis and Carly Tarkari Dodd (2024). Adelaide Contemporary Experimental.

Image 2: John Tain and Emmaline Zanelli (2024). Adelaide Contemporary Experimental.

Image 3: Opening Night: 'Fragments; a widening vision' (2024), event documentation, Adelaide Contemporary Experimental. Photography by Peter Fong.



## National Visiting Curators

The National Visiting Curators Program aims to create new national networking opportunities for South Australian artists by connecting prominent Australian curators with Adelaide's foremost studios, ACE and Post Office Projects (POP). In addition, the curators visit a range of other studios across Adelaide depending on the visiting curator's interests.

### 2024 Visiting Curators:

- John Tain, art historian and Curator of the inaugural 2024 Lahore Biennale
- Helena Kritis, chief curator at WIELS Centre for Contemporary Art in Brussels
- Olivia Aherne, curator at the Chisenhale Gallery in London, UK

The National Visiting Curators Program was delivered in partnership with Post Office Projects (POP).



Open Studios (2024), Marian Sandberg's studio, Adelaide Contemporary Experimental. Photography by Lana Adams.

# 2024 National Visiting Curators



## Jessica Clark

Curator at the Australian Centre for Contemporary Art, VIC

Jessica Clark is a proud palawa/pallawah woman, born in Iurtuwita/trowunna and currently living and working on Wurundjeri Country in Naarm/Melbourne. Clark currently holds several institution-based positions: Curator at the Australian Centre for Contemporary Art (ACCA); Curatorial Manager, Victorian First Peoples Art and Design Fair at Creative Victoria; and Ursula Hoff Fellow (2024-26), University of Melbourne.

Image 1: Jessica Clark. Photography by Keelan O'Hehi.  
Image 2: Lisa Catt, courtesy AGNSW.  
Image 3: Petrit Abazi, courtesy the curator.  
Image 4: Caity Reynolds, courtesy firstdraft.



## Lisa Catt

Curator at the International Contemporary Art at Art Gallery, NSW

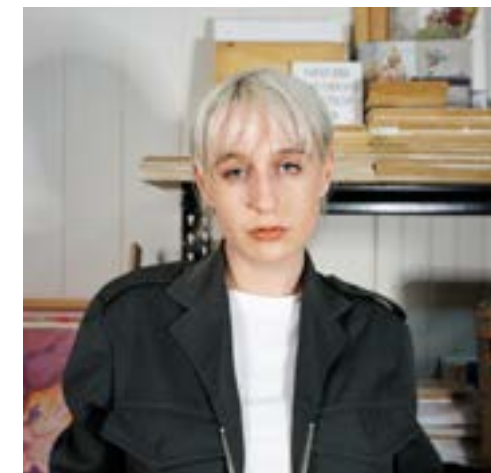
Lisa Catt is Assistant Curator, International Art at the Art Gallery of New South Wales (AGNSW) where she contributes to the acquisition, exhibition and care of the contemporary art collection. Recently she has worked with artists Eko Nugroho, Julian Rosefeldt and Yona Lee. Her interest in media, performance and installation art led to her central involvement in the AGNSW TimeBased Art Project.



## Petrit Abazi

Director of Northern Centre for Contemporary Art, NT

Petrit Abazi is Director of the Northern Centre for Contemporary (NCCA), Australia, on the lands of the Larrakia people. Born in Kosovo, he has a BA in Art History from the University of Trento, Italy and an MA in Art Curatorship from the University of Melbourne (Naarm). He has more than 17 years of experience working on over 50 exhibitions on Australian, Aboriginal and international art and material culture for arts organisations in Australia and Europe. Petrit has written over 200 texts on art in over 50 publications in English and Italian.



## Caity Reynolds

Director of firstdraft, NSW

Caity Reynolds is a practising artist, writer and curator. Prioritising empathy and compassion, she is committed to equity and the pursuit of sustainable working practices for artists and art workers. Working across painting mediums, small sculpture and text, her practice is currently examining the socio-political and economic systems that are used to alienate and oppress. More broadly, she explores class structures through depictions of seemingly humiliating, mournful or anxious experiences by utilising humour, play, satire and confession.

# Porter Street Commission



Opening Night: 'Fragments; a widening vision' (2024), event documentation, Adelaide Contemporary Experimental. Photography by Peter Fong.



# Porter Street Commission

## 2025 Recipient: Mark Valenzuela

From 1964 until 2016, CACSA was the longest-running contemporary art space in Australia. It was created by the young artists of the Contemporary Art Society (CAS) – itself dating back to 1942. These artists recognised the need for a space of their own to freely experiment and present work to the public. So, in 1964, they purchased a four-bedroom villa at 14 Porter Street, Parkside to convert into an art gallery, and there it operated until the property was sold in 2018. The proceeds were invested to establish the Porter Street Fund, which honours the vision of the CAS artists and the legacy of CACSA.

Clear constitutional guidelines – determining that 50% of revenue be reinvested and the remainder spent to support artists and art practice – ensure that the fund serves the community for whom ACE exists, and that it will benefit South Australian artists for decades to come.

Commencing in 2021, the Porter Street Commission awards \$20,000 to a South Australian artist at any stage of their career to create an ambitious new work for presentation at ACE the following year. Made possible by the Porter Street Fund, it is open to those working across all contemporary art forms and is designed to support a significant next step in a South Australian artists' career and exhibiting trajectory.

The 2024 recipient, Lee Salomone, presented *Fragments; a widening vision* at ACE in June 2024. This poetic exhibition explored intergenerational learning, migration, and the complexities of settler identity through sculpture. A series of public programs accompanied the exhibition, including a Deaf-led tour, artist talk, and a Diner Club event. *Fragments; a widening vision* attracted strong engagement and positive media attention, further cementing the significance of the Porter Street Commission within South Australia's contemporary art landscape.

In August ACE announced Mark Valenzuela as the recipient of the 2025 Commission. Applications for the 2025 Porter Street Commission were considered by a selection panel composed of Olivia Aherne, Curator at Chisenhale Gallery, London; Troy-Anthony Baylis, Adelaide-based artist and descendant of the Jawoyn people from the Northern Territory; and Danni Zuvela, Artistic Director at ACE. Based in Adelaide and working between Australia and the Philippines, Valenzuela has a two-decade practice exploring conflict, resistance, and power. His upcoming project will use his distinctive ceramic and concrete forms to examine defensive environments and the spaces between self and other.



Mark Valenzuela in studio (2024). Photography by Rosina Possingham.



# 2024 Board and Staff

## Board

Amanda Pepe  
(Chair)  
Fiona Salmon  
(Deputy Chair)  
Gemma Harris  
(Treasurer)  
Anton Andreacchio  
Hannah Andreyev  
Becci Love  
Yhonnie Scarce  
Bridget Currie  
Louise Rigoni

## First Nations Advisory Committee

Becci Love (Co-Chair)  
Yhonnie Scarce (Co-Chair)  
Marika Davies  
Dominic Guerrero  
Ryan Presley

## Staff

Louise Dunn  
*Executive Director*  
Danni Zuvela  
*Artistic Director*  
Harriet Culbertson  
*Marketing & Communications Manager*  
Sally Francis  
*Administrator*  
Rayleen Forester  
*Associate Curator*  
Grace Marlow  
*Public Programs Coordinator*  
Ava Viscariello  
*Marketing & Communications Assistant*  
Jake Yang  
*Future Studios Coordinator*

## Casual Staff

Hannah Coleman  
Crista Bradshaw  
William Maggs  
Isabel Margot  
Lee Salomone  
Asha Southcombe  
Tayer Stead  
Hen Vaughan

## Install Staff

Gus Clutterbuck  
Tom Dell'oso  
Faith Eadie  
Kobe Donaldson  
Pantelis Georgiadis  
Izak Hutchinson  
Olivia Kathigitis  
Jonathan Kim  
Jen Mathews  
Oakey  
Nat Penney  
Willa Pratt  
Sarah Tickle  
Jake Yang

## Interns

Tresma Strelan  
*Adelaide Central School of Art*  
Stephanie Eland  
*Adelaide Central School of Art*

## Archivist in Residence

Cameron Fleming

## Volunteers

Sam Atwood  
Sophia Balingit  
Amanda Barns  
Martina Beka  
Christina Blair  
Madeleine Coates  
Frankie Franchi  
Leif Gerhardy  
Bronte Jeffs  
Holly Keys  
Mary-Anne Le Roux  
Sienna Montgomery-Pittaway  
Ariella Napoli  
Hoa An Nguyen Phan  
Alice Parle  
Lauren Rawlings  
Annabelle Schuttloffel  
Matisse Schmidt  
Juliette Thomas  
Ben Verringer

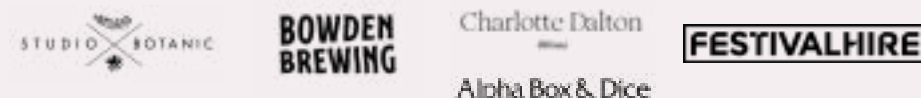
# 2024 Supporters and Partners

ACE is supported by the South Australian Government through Arts South Australia and the Australian Government through Creative Australia, its arts funding and advisory body. ACE is a member of Contemporary Arts Organisations Australia.

## Partners



## Sponsors



## People

### Benefactors

**David McKee AO & Pam McKee**

### Commissioning Donors

**Andreyev Foundation**

### 2024 Studio Donors

**Anton Andreacchio, Jane Ayers, Sally Ball, Candy Bennett, James Darling AM, Dr Alex Grant, Amanda Harkness & Karen Barrett, Thomas Lambert, Pam & David McKee AO, Jane Michell, Amanda Pepe, John Phillips, Louise Rigoni, Marian Sandberg, Tracey Whiting AM.**

### Friends

**Isabel Michell  
Mia Gambranis  
Mark Kamleh**



Opening Night: 'Yucky' (2024), event documentation, Adelaide Contemporary Experimental. Photography by Thomas McCammon.